

Media Statement

To: All Media

Date: Wednesday, 11 December 2024

Embargo: For Immediate Release

PRASA and City of Cape Town sign Service Level Plan to strengthen cooperation and collaboration between the two parties

Wednesday, 11 December 2024 – The Passenger Rail Agency of South Africa (PRASA) and the City of Cape Town have signed a groundbreaking Service Level Plan (SLP). Section 11 of the National Land Transportation Act entrusts to a municipality the functions of preparing transport plans for its area, ensuring compliance thereof and service level planning for passenger rail in consultation with Prasa.

This arrangement, the first of its kind between PRASA and a municipality, represents a partnership designed to harness cooperative governance and effectively implement service delivery obligations under national and local legislative frameworks.

It is crucial to emphasize that this Service Level Plan is specifically designed to enhance cooperation between the city and PRASA, and it is not an agreement about the devolution of rail services to the City of Cape Town, which rail services remains the exclusive prerogative of the Department of Transport. PRASA is set to sign Service Level Plans with other cities in which it operates.

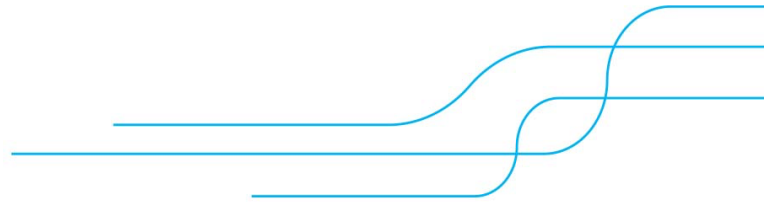
The areas of focus included in the Service Level Plan include comprehensive property management, improved security, and infrastructure development. Both organisations will work together to prevent illegal occupation of PRASA properties, deploy joint law enforcement and security personnel, and identify potential resettlement lands for illegally occupied areas. The partnership also prioritizes public safety along rail reserves, including planning and constructing pedestrian and vehicle bridges, and managing level crossings to minimize safety risks.

A key component of the Service Level Plan is integrated transport planning, which includes developing public transport facilities, incorporating commuter rail services into the City's Comprehensive Integrated Transport Plan (CITP), and creating transit-oriented development policies around station precincts. PRASA will contribute

Media Contact Person
Name: Andiswa Makanda
Contact Details:
Email: andiswa.makanda@prasa.com

Umjantshi House
30 Wolmarans Str.
Braamfontein
2001

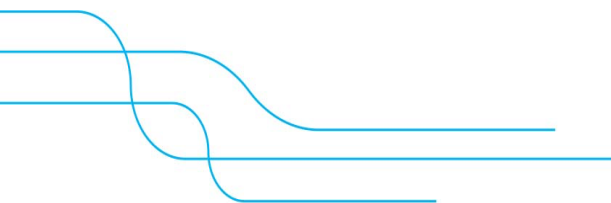
Private Bag X101
Braamfontein 2107
T+ 27 11 013 1667



by providing critical operational and performance data, continuing infrastructure rebuilding and maintenance, ensuring rail operations comply with safety regulations, and maintaining infrastructure according to corporate plans and budgets.

The City of Cape Town's commitments include supporting commuter rail services through appropriate municipal services, allocating dedicated budget and funding, investing in mobility infrastructure like MyCity services, and ensuring that commuter rail services remain the backbone of public transportation. This collaborative approach demonstrates a shared commitment to improving public transportation, enhancing community safety, and creating sustainable urban mobility solutions.

//Ends



Media Contact Person
Name: Andiswa Makanda
Contact Details:
Email: andiswa.makanda@prasa.com

Umjantshi House
30 Wolmarans Str.
Braamfontein
2001

Private Bag X101
Braamfontein 2107
T+ 27 11 013 1667